



WISDOM *for* Change

National Institute of  
Development Administration

Scholarship Granted in 9 Distinctive fields

# NIDA International Graduate Programs

& Training Courses Package



NEW ADMISSION:  
APPLICATION ENCLOSED

START: JANUARY 2019 & ALL YEAR ROUND



## HIS MAJESTY KING BHUMIBOL

### AND HIS ROYAL DEVELOPMENT PROJECTS

The year 2006 marked the 60<sup>th</sup> Anniversary of His Majesty's Accession to the Throne, making him at present the world's longest-reigning Monarch. The philosophy of sufficiency economy has been developed and advocated for the past three decades by His Majesty King Bhumibol Adulyadej of Thailand based on H.M.'s accumulative experiences in rural development. Therefore, the United Nations has honored His Majesty with the United Nations Development Programme (UNDP) Human Development Lifetime Achievement Award 2006 **"for his dedication to develop and industriously uplift the living condition of Thai people all through his 60-year reign"** presented by Mr. Kofi Annan, Secretary-General of the United Nations during his visit to Thailand on 26 May 2006. During His 60 year reign, the King has faithfully and earnestly carried out his pledge. More than 4,000 development projects have been initiated by the King and implemented throughout the country, most of them aimed at improving the living conditions of his subjects, especially those in the remote rural areas.

All these development projects have originated from the frequent and extensive trips made by His Majesty, sometimes accompanied by Her Majesty Queen Sirikit and other members of the Royal Family, to all regions of the Kingdom, using one of the four provincial royal residences as the starting point. They are located in Chiang Mai in the North, Sakon Nakhon in the Northeast, Hua Hin in the Mid-South, and Narathiwat in the Far South. The King established three Royal Development Study centers to Chachoengsao, Phetchaburi and Chanthaburi in the Central Plain to facilitate the implementation of the Royal Development Projects.

The Royal Development Projects are divided into eight categories according to the sector of the economy being targeted viz: Agriculture, Environment, Public Health, Occupational Promotion, Water Resources, Communications, Public Welfare, and others. They can also be classified according to how they are related to His Majesty, as follows:

#### The Projects initiated according to His Majesty's wishes:

These are the projects in which the King conducts study and experiments himself. They are based on the recommendations of experts and carried out with his private funds in the early stages. Once the projects have yielded satisfactory results, His Majesty passes them onto the government for further development. The Royal Projects: They are the private projects of Their Majesties the King and Queen, such as the crop substitution project in the North, which aimed at stopping opium cultivation, deforestation and the slash and burn cultivation method traditionally used by the hill tribes. His Majesty has given them advice and assistance on the planting of cool climate fruits and flowers for a better income.

#### The Projects Under Royal Patronage:

These are projects operated by the private sector using its own financial, technical and human resources and based on His Majesty's advice and guidelines. They include the Thai Encyclopedia for Youth Project, the Dictionary Project and the Din Daeng Cooperative Village Development Project.



*Siswanee*  
**Cassia fistula**  
 The tree of NIDA 🇹🇭

- 02** His Majesty King Bhumibol And His Royal Development Projects
- 04** NIDA President's Welcoming Address
- 04** Why NIDA?
- 05** About NIDA
- 06** Tips of Living in Thailand and Estimated Yearly Cost of Living
- 08** The Best Living Library in ASEAN: Library and Information Center
- 10** Siripattana Training Center
- 12** Research Center
- 13** NIDA International Graduate Program Checklist
- 14** What Our Students Say
- 15** Graduate School of Public Administration
- 17** Graduate School of Business Administration
- 18** Graduate School of Development Economics
- 20** Graduate School of Applied Statistics
- 22** Graduate School of Language and Communication
- 24** Graduate School of Human Resource Development
- 26** Graduate School of Communication Arts and Management Innovation
- 28** Graduate School of Tourism Management
- 30** International College of NIDA
- 32** The Office of International Affairs
- 34** NIDA Partners' MOU Map



Professor Kamphol Panyagometh, Ph.D.  
President

## NIDA President's Welcoming Address

*Sawasdee krub,*

On behalf of all the faculty, staff and students of National Institute of Development Administration, it is my pleasure to warmly greet you with this welcoming address. NIDA's creation was inspired by His Majesty the Late King Bhumibol Adulyadej's wisdom of advancing Thailand's development through the establishment of an advanced educational institution to groom people to serve as agents of national development change.

NIDA has been Thailand's first Graduate School since 1966. It has grown over the years and it currently offers 25 excellent Graduate programs from 9 distinctive faculties. In addition, NIDA also provides various training courses which have been individually customized, for corporate and governmental executives with a pragmatic and functional approach.

For the last 52 years, NIDA exists and stands today as Thailand's leading educational institution concentrating exclusively on graduate studies in fields related to national development to serve the public business and non-profit sectors by applying optional knowledge, analytical ability and other skills at the community, national and international levels. Currently, NIDA's determination is to become a leading World Class University serving as a high quality institution in Thailand.

*Sincerely,*

## Why NIDA?

- The first Thailand Graduate School inspired by His Majesty King Bhumibol Adulyadej's vision emphasizing Development Administration research since 1966 accredited by Commission on Higher Education.
- Most faculty members possess doctoral degrees, excellent academic qualifications and extensive experience as practitioners.
- Faculty members present and publish a large number of high quality researches at the international level each year.
- Up-to-date and High Quality International Curricula that is cost effective in solving the shortage of postgraduates in Development Sciences.
- International Collaboration: more than 40 MoUs with international universities including exchange programs and research.
- World-standard interactive classes and modern high-tech teaching and studying facilities including NIDA web journal, e-Library, and student services.
- Our MBA Program is amongst the top 5% of the world with the world-renowned accreditation by AACSB.
- Our Public Administration Program is the first and the largest school in Thailand that produced over 90% of high-level government officers in the Nation.
- Our Master and Ph.D. Programs in Tourism Management Program are the 1<sup>st</sup> and 2<sup>nd</sup> graduate programs in ASEAN with TedQual accreditation from the UNWTO.
- Ph.D. Program in HRD is amongst the top of ASEAN with accreditation by AUN QA.
- Our Master Programs in Logistics Management and Information Technology Management are accredited by AUN QA.
- Our Master of Economics and Management is amongst the top of ASEAN with accreditation by AUN QA.
- Offering a large number of full and partial financial aids and scholarships.
- NIDA has produced 66,461 high quality graduates from more than 50 countries who have become leaders of change and development in the global community both at the national and international levels since NIDA was established.



**The National Institute of Development Administration (NIDA) was established following His Majesty King Bhumibol Adulyadej's vision of advancing Thailand's development through the establishment of an advanced educational institution to prepare people to become agents of change for national development.**

The inception of NIDA grew out of His Majesty the King's discussions in 1963 with Mr. David Rockefeller of the Rockefeller Foundation in the United States of America regarding the country's development. The result was the emergence of NIDA on April 1, 1966. NIDA was established with financial support from the prestigious Ford Foundation in the U.S.A. and academic assistance from the Midwest Universities Consortium for International Activities (MUCIA), the official accrediting organization of all U.S. institutions of higher education, and became an educational institute of higher education for Thai scholars who would otherwise study abroad. Under the beneficence of His Majesty the King, NIDA exists and stands today as Thailand's leading educational institution concentrating exclusively on graduate studies in fields related to national development.

NIDA was originally established to support national development in Thailand; this objective has now been expanded to encompass regional development in countries outside of Thailand, with the aim of producing advanced degree graduates who can serve in the public, business, and nonprofit sectors. At present, NIDA is a state-support graduate institution with university status, and it is one of the very few higher educational institutions in Thailand that offer exclusively graduate degree programs. NIDA is a dynamic, unique, service-oriented graduate institution which seeks to meet many of Thailand's and the region's critical needs in development administration. Recognizing the increasing interdependence of nations across the globe and responding to the priorities of Thailand's Plan for Higher Education, NIDA aims to foster cooperation, understanding, and service through teaching, training, research and consulting. NIDA provides its students with the necessary knowledge, analytical ability, and other skills to be applied for community, national, and international levels. A number of schools, centers and supporting services of NIDA are constantly evolving and adopting the latest technology and methodology. Its faculty members' task performance greatly contributes to NIDA's educational excellence. More than ninety percent of the faculty members hold doctoral degrees or the equivalent. NIDA's present and former faculty members play important roles and serve many vital positions in helping to regulate national policies and direct national development and administration.

NIDA is well-known as a unique higher education institute in Thailand which provides students at the graduate level with a variety of skills necessary for public policy planning, decision making, and management in the public and private sectors. NIDA's graduates are currently serving in key positions in both public and private sectors in Thailand.





# TIPS OF LIVING IN THAILAND

## Country

Thailand, the only Southeast Asian nation has never been colonized by European powers, is a constitutional monarchy whose current head of state is H.M. King Maha Vajiralongkorn Bodindradebayavarangkun. Kingdom of Thailand known as **“Land of Smile”**; capital city is Bangkok. Thailand size is most nearly equal in size to Spain. Thailand has a rough geographical area of 514, 000 sq. km. Founded in the thirteenth century, the Kingdom of Thailand was known until 1939 as Siam referred to as Siamese, the people of Thailand are now called **“Thai”**, which itself mean **“Free”**, Thailand being **“The Land of The Free”**.

## Highlight

- UNESCO has awarded Bangkok the World Book Capital City 2013 **“Bangkok, Read for Life”**.
- Thailand has been voted as The ‘Best Destination - Asia Pacific **‘Readers’** Choice Award from Travel Weekly Asia in 2018.
- For the third year in a row, Bangkok is the top international destination in the world in 2018.
- Destin Asian magazine, a leading travel and lifestyle magazine, has awarded Bangkok as the **“Best City Destination in the Asia Pacific”** for the third consecutive year in 2018.
- CNN named Massaman curry the **“World’s Best Food”** in its recently updated list of the 50 most delicious foods ever created in 2017.

## Where to Go

There are five regions of Thailand: North, Northeast, East, Central, and South, which contains unique cultural, historical, and natural attractions from the northern peaks (replete with wildlife and home to exotic hill tribes) and the central plains (the **“Rice Bowl of Asia”**) to the northeastern plateau (stretching to the Mekong River border with Laos) and the spectacular beaches and islands of the south (including both Phuket and Samui).

## Social Customs

- Do not be surprised if you are addressed by your first name, e.g. Mr. Bob or Ms. Mary, instead of your last name. This is because Thais refer to one another in this manner, usually with the title Khun (Mr., Mrs., or Ms.) in front.
- Thais do not normally shake hands when they greet each other, but instead press the palms of their hands in a prayer-like gesture called **“Wai”**. Generally, a younger person should wai an older person, who will then return it.
- It is considered rude to use your foot for pointing, especially when pointing at a person. Thais regard their head as the highest part of the body. They do not approve of touching anyone’s head, even in a friendly gesture.
- In Thai culture the head is considered the holiest part of the body, thus touching someone else’s head is seen as a major insult.
- Public displays of affection between men and women are frowned upon. You may see some young Thai couple holding hands but never kissing in public.
- Losing your temper, especially in public, will most likely get you nowhere. Thais see such displays as poor mannerism. You have a greater chance of getting what you want if you keep a cool head and remain polite.

## Estimated Yearly Cost of Living

- |                       |                 |             |                         |                   |             |
|-----------------------|-----------------|-------------|-------------------------|-------------------|-------------|
| • On-campus Dormitory | 56,000          | Bht. / year | • Off-campus Apartment  | 105,000 - 154,000 | Bht. / year |
| • Food & Beverage     | 70,000 - 84,000 | Bht. / year | • Public Transportation | 14,000 - 28,000   | Bht. / year |
| • Health Insurance    | 7,000           | Bht. / year |                         |                   |             |

### Note:

Currency exchange rate: THB 35 = US\$ 1



## Do's and Don'ts

As in any unfamiliar society, a visitor should, nevertheless, be aware of certain do's and don'ts to avoid offending people unintentionally. Basically, getting along involves good common sense and how one should behave at home. Still, there are a few special tips for travelers to Thailand.

## The Monarchy

Thais revere the Royal Family, and visitors should be careful to show respect for His Majesty the King, the Queen and their children. For example, in a movie theater, movie-goers are required to stand up while the royal anthem is played. When attending a public event, at which a member of the Royal Family is present, watch the crowd and do what it does.

## Religion

- Please dress and behave politely and appropriately especially women when visiting temples.
- Please take of shoes when entering inside the chapel where the Buddha images are kept.
- Buddha images are sacred, whatever size or condition. Never climb on a Buddha image, and be very careful about taking photos - some images are so sacred photographs are forbidden.
- Buddhist monks are forbidden to touch or be touched by a woman or to directly accept anything from a woman. Please hand it to a man who will present to the monk or place it on the monk's saffron robe or a handkerchief.
- In a Muslim mosque, men should wear hats and women should be well covered with slacks or a long skirt, a long sleeved buttoned-up blouse, and a scarf over the head. Everyone should remove her/his shoes before entering the mosque and should not be present during a religious gathering.

## Telephone

The Thai phone system is both modern and widespread, with comprehensive coverage for cell phones and reliable pay phones found throughout the kingdom at most convenient stores. Purchasing a second-hand Thai phone is inexpensive and convenient. Emergency numbers include Police 911, Fire Fighter 199 and Tourist Police 1155.

## LIBRARY & INFORMATION CENTER:

# THE BEST LIVING LIBRARY IN ASEAN

EXCELLENT FACILITIES



### E-Book

e-Books are designed and developed to be user friendly for searching, reading, borrowing, reserving, and downloading digital resources especially e-book via the tablet only in the Library. Storing your favorite e-book in your profile can also be done.



### Digital Bookshelf

Digital Bookshelf is expanded and created using the interactive touch screen allowing users to view new resources such as the cover page, content, sample book content or movie trailer and can be used also to reserve books through the Digital Bookshelf, as well as reviewing the most popular books, movie show time and library's public relations information.

### Mini Theater

Mini Theater is evolved and arranged in a movie theater style space equipped with audio and video systems allowing users to not only watch videos from various media, but also reserve, confirm, return, renew the Mini-Theater through the online system.



## Digital Information Display

Digital Information Display is established and grown to a total of 16 video walls which can be controlled via tablets to display welcome signage and record the library visitors, present the library map, NIDA's map, archival information including broadcast of the graduation ceremony and other meaningful events by combining 16 screens into a single screen.



## Directory Terminal

Directory Terminal is acquired and constructed by employing an interactive touch screen allowing users to view each floor layout.



## Extra reading area for internal members

The extra reading area is located on the 4<sup>th</sup> Floor of Sukum Navapan Library for quiet study and reading. This reading area is reserved for NIDA students, instructors and staff. You must use your student ID card/ smart card to enter the extra reading area.

## Self-Service Checkout

NIDA Library now offers Self-service checkout to enable users to complete the borrowing process by themselves. Just scan your student ID card, then place your books, one at a time, on the machine. Once you have checked out your materials, date due slips will be printed automatically. Users are encouraged to use the self-checkout machines, which are on the 2<sup>nd</sup> and 3<sup>rd</sup> floor of Sukum Navapan Library.



## Self Service Book Return

We are pleased to introduce our new self-service book return. You can return your books at any time - no need to queue at the library circulation desk during opening hours. Please ensure that you place your books on the machine, one at a time, and your returned book titles will be displayed on the screen.

The Self Service Book Return Machine is located on the L Floor of Bunchana Attakor Building, beside the SE-ED bookstore.

### Library Contact Information:

The National Institute of Development Administration,  
Library and Information Center

Address 2<sup>nd</sup> Fl., Bunchana Atthakorn Building, 118 Moo 3,  
Seri Thai Road, Bangkok, Bangkok 10240 Thailand

+66 (0) 2727 3737, +66 (0) 2377 5481

+66 (0) 2375 9026, +66 (0) 2374 0748

<http://library.nida.ac.th>

[services@nida.ac.th](mailto:services@nida.ac.th)  NIDA\_Library

<http://www.facebook.com/NIDALIBRARY>

[http://twitter.com/NIDA\\_Library](http://twitter.com/NIDA_Library)

# SIRIPATTANA TRAINING CENTER

## About Us

"Siripattana Training Center" (originally "The Training Center") was transferred from Thammasat University's Faculty of Political Science (Public Administrations Department) and was first established on April 1<sup>st</sup>, 1966, at the same time as the inception of National Institute of Development Administration (NIDA). The Training Center's primary mission is to advise and organize training to improve the competence of government officials. During that time, the Training Center was considered as the central hub of developing Thailand public administrators and leading executives and also as the main producer of quality trainers to serve the public and private sectors.

On April 21<sup>st</sup> 2012, Her Royal Highness Princess Maha Chakri Sirindhorn graciously granted the Training Center a new name, "Siripattana Training Center". The meaning of auspicious name is "The Center of Excellence in Management and Development" and ever since has become our commitments to the general public and society.

Since April 1<sup>st</sup> 1966 to the present, Siripattana Training Center still maintains its reputation as a central hub in delivering high quality training on behalf of NIDA, continues the Training Center's primary vision to develop Thai leaders in the field of Development Administration and remains its primary mission in propagating and relaying management technology. With over 50 years of experience in training industry, it is more a testament to the service quality of Siripattana Training Center.



## Our Services

- Provide a full range of training services as a one-stop service center
- Provide consulting services for organization development and human resource development through an implementation of various training techniques.
- Conduct a training needs assessment to evaluate the necessity of personnel development
- Design training programs tailored to client organization's specific needs
- Provide Pre-test and Post-Test to evaluate learning results
- Provide free of charge academic training to society

## What makes us different?

- Siripattana Training Center is a professional training provider with over 50 years of experience in training industry. Our high-quality service is guaranteed for all aspects: professionalism, course content and trainers, excellent facilities, good value for money and timely delivery.
- As NIDA focuses on graduate education and is known as one of Thailand's think tanks, NIDA is home to a number of highly qualified Ph.D. faculty members. These professors will be carefully selected as a training program advisor to help designing course content and learning activities.
- As our training programs cover in-depth knowledge from case studies and published research findings of NIDA own research projects, trainees with Siripattana Training Center will be fully benefited from the opportunity to learn new things that can be verified and proven.
- Our dedicated and experienced staff is committed to facilitating every need in every training program we entrust. We will make every effort to exceed the expectations of our clients to confirm our reputation with more than 50 years.




## EXAMPLES OF OUR COURSES:

**Public Policy & Administration Programs**




- Policy Analysis and Interpretation
- Local Governance
- Local Development Planning Process
- Sub-National Administration System in Thailand
- Economic Development Policy and Planning
- Strategic Management in Economy

**Accounting, Finance & Trade Programs**



- Accounting and Financial Management
- Public Finance
- National Budget and Public Debt Management
- Capital Management
- Free Trade Agreement and Negotiations
- International Trade Facilitation

**Project Management Programs**




- Project Design and Management
- Project Cycle Management
- Advanced Project Management

**Human Resource Management Programs**




- Workforce Planning
- Human Resource Development
- Result Base Management

**Information Technology & Statistics Programs**




- Information Technology and Statistics
- Fundamental of Labor Statistics
- Civil Registration and Vital Information Collection System

**Environmental Issues**




- The Establishment of Overall Environment Protection Standards
- Best Available Technique (BAT) & Best Environmental Practice (BEP) under the Context of United Nations Industrial Development Organization (UNIDO)

**ASEAN Related Topics**



- Workshop on DNFBP Regulation and Supervision
- ASEAN Single Electronic Window
- Logistics Management

**Other Training Programs**



- Sufficiency Economy Philosophy: Thailand's Path towards Sustainable Development
- Eco Tourism Management
- Construction Project Management and Planning
- Land Administration and Management
- Immigration Services
- Office Management and Administration
- Gender Statistics and Gender Responsive Planning

*For more information, please contact:*

**Mrs. Thattawan Anuntagool**  
 Director of International Training Program  
 Tel: (+66) 2727 3598, (+66) 2727 3213-14  
 Fax: (+66) 2375 4720  
 Email: thattawan\_an@hotmail.com

**Ms. Thanyathorn Oun-Anulom**  
 Director of Specialized Training Program  
 Tel: (+66) 2727 3597, (+66) 2727 3231  
 Email: thunyathorn2018@gmail.com



visit our website:

[www.training.nida.ac.th](http://www.training.nida.ac.th)

# INFORMATION & TECHNOLOGY CENTER (ITC)

ITC is responsible for information and communication technology of the whole Institute. By this means, ITC developed and maintained IT systems to work units all over NIDA and its community. Also, ITC was entrusted with other IT-related tasks including maintenance of IT systems for education quality assurance, e-office-related work systems, and e-learning systems.

- **NetID** is an account used for accessing NIDA's information systems. The account will be given to all students who registered. NetID example: name.sur@stu.nida.ac.th
- **E-mail** NIDA has now implemented Microsoft Office 365 to support our students and staff. E-mail address consisted two parts: a user name and domain name. Student log in by using name.sur@stu.nida.ac.th (Graduating students keep their email accounts for life)
- **Help Desk** Information Technology Center has arranged call center staffs for troubleshooting and giving advice about our services. Moreover, if you need troubleshooting your computer or setting up wireless network, bring it to us at Help Desk department located in 9<sup>th</sup> floor of Sayam Boromrajakumari Building.
- **Walk-in Computer Lab** Located on the 9<sup>th</sup> Floor of Sayam Boromrajakumari Building.

## Service hours

Monday - Friday: from 08.30 a.m. - 06.30 p.m.  
Saturday - Sunday: from 08.30 a.m. - 05.30 p.m.

Close on official holidays and NIDA classes' suspension day. For the case that basic trouble shooting is unable to solve, we will forward to our specialist for further trouble shooting. Contact: (662) 727-3777

## Automatic Wi-Fi connection for smartphones

We have 3 Wi-Fi hotspot names which is @NIDA, @NIDA by AIS and @NIDA by true. Our Wi-Fi signal is covered almost everywhere in NIDA. Some area will not have all of the hotspots so, we recommend you to setup all 3 connections.

Setting > Wi-Fi > select one of this SSID : @NIDA,@NIDA by AIS or @NIDA by true

*\* This service requires NetID username and password authentication.*

- **Print Quota** Students can request and purchase the print service at 9<sup>th</sup> Floor of Sayam Boromrajakumari Building and NIDA's Library and Information Center.  
Website: <http://itc.nida.ac.th>

# Research Center

## VISION

“

Towards research excellence and dissemination of research at the national and international levels

”

NIDA is an educational institute devoted exclusively for graduate studies. Therefore, a great emphasis is placed upon research. NIDA promotes research for both students and support and academic staff with a main concentration on the field of development administration in order to develop a body of knowledge and research for practical purposes.

NIDA master's programs provide options for students to complete a program with a master's degree thesis or independent study in the field of study in which the students are interested. The doctoral program students, on the other hand, must complete a doctoral dissertation in order to master a body of knowledge. In addition, NIDA offers annual NIDA Thesis Awards, a grant awarded to students who have an outstanding research output.

Research grants for NIDA academic staff have been systematically offered through the Research Center since 1966, with the objective of promoting research in social sciences for national development. The main functions of the Research Center are not only to promote research through funding, but also to conduct research, to coordinate research projects, to offer training in research-related issues, and to disseminate research results. The Research Center also sponsors research projects through various funds such as the Research Promotion Fund, the Research Promotion and Development Fund, and the Fiscal Budget Research Fund. The Research Center disseminates research results through the NIDA Development Journal and NIDA Case Research Journal. On many occasions, NIDA has organized scholastic seminars of our institute which are widely publicized. In addition, the Research Center offers post-doctoral fellowship programs for qualified researchers, from domestic to international institutions.





Apart from the Research Center's funding, all NIDA graduate schools have promoted research through funding support allocated on the basis of each school's budget.

## 12 Research Centers

- Center for Reform and Evaluation on Public Affairs Research
- Center for Service Sector and Tourism Research
- Center for AEC Capability Research
- Center for Quality of Life and Community Wellbeing Research
- Center for Aging Society Research
- Center for Economic Growth and Inequalities in Society Research
- Center for Environment and Global Warming Research
- Center for Farm Product Marketing Research
- Center for Smart City Research
- Center for Prevention and Suppression of Corruption Research
- Center for Competitiveness Research
- Center for Entrepreneurship and Innovative Research

Website: <http://rc.nida.ac.th/>



# NIDA

## INTERNATIONAL GRADUATE PROGRAM CHECKLIST

1. A completed application forms
2. A copy of personal identity of passport
3. Official Transcript (s) of all university studies
4. A resume
5. A statement of purpose
6. TOEFL or IELTS score report (if applicable)
7. GMAT score report (if applicable)
8. 2 or 3 Letters of recommendation in sealed envelopes
9. 2 photographs (1-inch color photo)



For more information  
on applications,  
please directly scan here.



## What Our Students Say



I chose NIDA as I am stationed in Thailand and needed a comprehensive course that would prepare me to quickly start my HR career. NIDA's HROD curriculum combines both HR and OD, which is rare; other modules are either HRM/HCM or OD. NIDA's SHRD syllabus also extends into practice and covers topics required in HR professional certification, making it ideal as an alternative to certification. The inclusion of Epistemology in NIDA's SHRD program makes it unique and very important that helps structure how we think, especially when putting theories into practice.

**Mr. Mak Chee Wai**, *Graduate School of Human Resource Development, Singapore*

With my master studies at the International College of NIDA in Bangkok my long-cherished dream of a stay abroad in Thailand finally came true. I became aware of NIDA through a partner program with my German university. I am happy to be able to study at NIDA because the reputation is good, the facilities and the environment are great and the staff are always nice and helpful. The concept of monthly courses with internationally renowned professors is just right for me, I learn a lot about culture and management, which I can use well for my professional future. I would do it again and can only recommend it to everyone. NIDA is a great place to study.

**Ms. Irina Esposito**, *International College of NIDA, Federal Republic of Germany*



NIDA is the best university in the research area of administration and development. Since a long time ago, I wanted to be a student of NIDA. I was deeply attracted by NIDA's rich study and life facilities. NIDA has many impressive and beautiful buildings. The sports venues, dining rooms, banks, and convenience stores on first or second floor, are very useful and convenient. NIDA has many excellent libraries, they support students with rich online resources about books, journal articles, newspapers and other resources. Libraries also create a perfect environment and atmosphere for academic research. I love NIDA so much, and I am very proud to be a student of NIDA.

**Mrs. Ling Xu**, *People's Republic of China. International College of NIDA.*

I decided to pursue my study at NIDA from among many schools not only in Thailand but also other countries, because NIDA offers only graduate programs, which means students receive a high quality education. Besides, NIDA is well-known for MBA, which is acknowledged by AACSB, as the First Business Administration Program of Thailand. Also it was a great decision that I put myself into the new environment in South east Asia, where there are almost no Japanese, and interacted with many Thai students and international students. Thanks to this opportunity, I broadened my perspectives. I am sure that this experience will lead to my bright future career.

**Mr. Aihara Kento**, *Graduate School of Business Administration, Japan.*



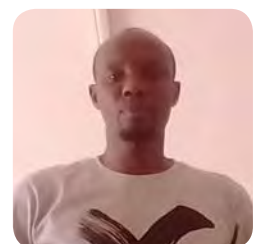
I decided to study at NIDA because I wanted to experience an education system which is different from my home country. Another prominent factor which triggered my decision to study at NIDA is its good reputation and experienced professors, who enable me to develop professional knowledge and skills. The decision to choose NIDA provided me the opportunity to discover myself while gaining an understanding of a different culture, incredible customs, traditions and the social atmosphere of Thailand. I strongly recommend NIDA for those students who want to get quality education and to experience cross-culture diversity.

**Miss Iqra Arshad**, *Graduate School of Development Economics, Islamic Republic of Pakistan*

With diverse, research focused, global oriented academic programmes; modern teaching and learning facilities, structures, systems and infrastructure; highly qualified professors with vast knowledge and experience in their respective fields and drawn from a diverse cultural background (Asia, Africa, Europe, the Americas and Australia) NIDA is, by all measure and standards, the true definition of a world class university and a reputable international centre of academic excellence. Its resource centres are truly second to none: well equipped, well and competently staffed and highly computerized. Simply put, NIDA is one of the regional as well as world's finest centres of academic excellence. Perhaps, this statement from a visiting professor from Russia sums it all "this university (NIDA) has everything in place. It's simply one of the best there is."

**Mr. Matthews Tinkha Kafumba**

*International College of National Institute of Development Administration, Republic of Malawi*





# Graduate School of Public Administration



## School in Focus

- Thailand's first graduate school offering graduate level courses in public administration over the five Decades.
- Graduates from GSPA hold important positions in various public and private sector careers and are known to help contribute to Thailand's development.
- The Ph.D. Program in Governance and Development hosts lectures and seminars given by visiting lecturers from other universities abroad on a regular basis.
- The Program has exchange study agreements with a number of universities in the United States, Germany, Taiwan, the Philippines, Mongolia, Bangladesh, Laos and Vietnam. Through these exchange agreements, students are encouraged to study for the duration of one semester in one of the partner universities. The Program also accepts students from the partner universities to complete studies in the Program.
- Students are also encouraged to make a short visit and attend conferences and seminars in other countries that deal with subjects taught by the program and in which they have a research interest.

## Doctor of Philosophy Program in Governance and Development (International Program)

- 3-4 Years. 63 Credit Hours (Course work 27 Credit Hours and Dissertation 36 Credit Hours)
- Tuition fee 500,000 Baht / Program (\$ 15,152)

## Key Features of the Program

This program is offered over the two decades and unique inter disciplinary program combines course work with knowledge on the ASEAN, AEC and advanced management research designed but also improves the management and research skills of academicians, researchers, executives and professionals from public and private agencies and international institutes so that they are able to improve their development policies and organizational effectiveness. The program offers two fields of specialization; 1) Organization and Human Resources Governance and 2) Public Policy and Development.

## Master of Public Administration - Public Policy and Strategy Management (English Program)

- 2 Years. 39 Credit Hours (Plan A2: Course work 27 Credit Hours and Dissertation 12 Credit Hours/ Plan B: Course work 36 Credit Hours and Individual Studies 3 Credit Hours)
- Tuition fee 100,000 Baht / Program (\$ 3,030) - Intake : August (Once intake a year)

### Program Objectives:

- To produce graduates with knowledge and expertise in administration.
- To produce graduates with the ability to analyze, synthesize and apply knowledge to complex situations or problems, and apply research skills gained to solve problems.
- To produce graduates with motivation for lifelong learning, sharp decision making skills and the ability to lead change.

Courses	Track A2	Track B
1. Basic Courses	Non-credit	Non-credit
2. Core Courses	12 credits	12 credits
3. Major Courses	9 credits	9 credits
4. Elective Courses	6 credits	15 credits
5. Independent study	-----	3 credits
6. Comprehensive examination	Written exam	Written exam
7. Thesis	12 credits	-----
<b>Total</b>	<b>39 credits</b>	<b>39 credits</b>



**Career Opportunities** Executives in public and private sectors, Politicians and political officials, Professionals in International Organizations, Lecturers or academics in social sciences and Government officers.

### Scholarship

A Number of Scholarships yearly offered.



MPA's QR Code  
<http://gspa.nida.ac.th/en/1uvy>

#### Note:

1. Please download application form from <http://gspa.nida.ac.th/gspa/en/> and visit <http://edserv.nida.ac.th/> and <http://gspa.nida.ac.th/en/1uvy> and <https://www.facebook.com/GSPANIDAOfficial/> or email: [mpampm.gspa@gmail.com](mailto:mpampm.gspa@gmail.com) and Tel. (+66) 2 - 727-3871 for further information on admission qualifications and requirements.
2. These expenses are inclusive of admission fee, tuition fee for non-credit courses, Textbooks, enrollment fee, registration fee, Thesis Defense, Comprehensive Examination and exclusive of Health insurance fee. For further inquiry, please visit <http://gspa.nida.ac.th/gspa/en/> and <http://edserv.nida.ac.th> or submit directly at Graduate School of Public Administration Office, 10<sup>th</sup> Fl., Navamintrathiraj Building, Klongchan, Bangkok, Bangkok.

Currency exchange rate:  
 THB 33 = US\$ 1





## School in Focus

- Established in 1967, the Graduate School of Business Administration at NIDA was the first school in Thailand to have offered an MBA program that has continuously dedicated all of its resources and expertise to providing only graduate level business education for more than four decades (46 years). About 500 students are awarded the MBA degree each year.
- International Study Opportunities Qualified English and International MBA students can participate in exchange programs with 24 partnership universities in various countries around the globe, e.g. in Australia, Germany, China, Japan, and the US. The school will cover the tuition fee. However, students are responsible for airfare, room and board, and living expenses.
- MBA Program is accredited by AACSB, only 2 universities in Thailand and merely 5% universities in the World.

### Doctor of Philosophy Program in Business Administration (International Program)

- 3-4 Years. 60 Credit Hours (Course work 18 Credit Hours and Dissertation 48 Credit Hours)
- Tuition fee 1,100,000 Baht/ Program (\$ 33,334)

### Master of Business Administration English Program

- 2 Years. 48 Credits. (Course work 45 Credit and Independent Study 3 Credit Hours)
- Tuition fee 140,000 Baht/Program (\$ 4,243)

### Master of Business Administration International Program

- 2 Years. 42 Credits. (Course work 39 Credit Hours and Independent Study 3 Credit Hours)
- Tuition fee 520,000 Baht/Program (\$ 15,758)

### Master of Business Administration – Accelerated MBA (International Program)

- 1.5 Year. 42 Credits. (Course work 39 Credit Hours and Independent Study 3 Credit Hours)
- Tuition fee 229,000 Baht/Program (\$ 6,940)

### Master of Science in Financial Investment and Risk Management (International Program)

- 1.5 Years. 36 Credits. (Course work 33 Credit Hours and Independent Study 3 Credit Hours)
- Tuition fee 450,000 Baht/Program (\$ 13,634)

### Scholarship

Scholarships offered for Doctoral and Master Degree to applicants with distinguished achievements per year.

#### Note:

1. Please download application form, recommendation letter form and scholarship application forms from [www.oia.nida.ac.th](http://www.oia.nida.ac.th) and visit <http://edserv.nida.ac.th/> for further information on admission qualification and requirements.
2. These expenses are inclusive of admission fee, tuition fee for non-credit courses, Textbooks, enrollment fee, Registration fee, Thesis Defense, Comprehensive Examination and exclusive of Health insurance fee. For further information, please visit <http://edserv.nida.ac.th>.

Currency  
exchange rate:  
THB 33 = US\$ 1



## SCHOOL IN FOCUS

- Established in April 1966 (the same time as the National Institute of Development Administration) for over 50 years.
- Confers the following degree: Master of Economics (English Program), Master in Business Economics, Master in Financial Economics, Master in Economics and Management (English Program) and Doctor of Philosophy Program in Economics (International Program).
- Thailand's first and only faculty of economics where all the faculty members hold doctorate degrees from the world's prestigious universities.
- The instructors also have teaching and research expertise in various fields.

### Doctor of Philosophy Program in Economics (International Program)

#### 3 Years. Plan 1.1

- Examinations and Dissertation research 48 Credits (*Dissertation 48 Credit Hours*)\*
- Estimated Tuition fee 440,000 Baht/Program (\$ 13,334)

#### 4 Years. Plan 2.1

- Coursework, Examinations and Dissertation research 66 Credits (*Course works 30 Credit Hours and Dissertation 36 Credit Hours*)\*
- Estimated Tuition fee 560,000 Baht/Program (\$ 16,970)

#### 5 Years. Plan 2.2

- Coursework, Examinations and Dissertation research 90 Credits (*Course works 42 Credit Hours and Dissertation 48 Credit Hours*)\*\*
- Estimated Tuition fee 680,000 Baht/Program (\$ 20,606)

\* The prospects with Master's degree graduate.

\*\* The prospects who graduated with Bachelor's degree with honors in any field.

### Key Features of the Program

The program aims to prepare qualified post-baccalaureate students through the rigor and high level of scholarship in the subject matter of the doctor of Philosophy with the acquisition of analytical skills in research for those who need the highest level of research training and who wish to pursue careers in colleges and universities, research institutes, public agencies as well as industrial and business organization. The close interaction of our students and Faculty provides a Forum for the sharpening of research questions that will engage students in the complexity of the issues surrounding global economic theory today to support our Ph.D. graduates to produce Ph.D. dissertations of high contribution that will make the greatest impact to the course of economic development. The program possesses an international focus to provide opportunities for student to make appropriate applications to ongoing development agenda not only in Thailand and Southeast Asia but also globally as well.





Certified by AUN QA



## Master of Economics (English Program)

### 2 Years. Plan A

- Coursework and Thesis 36 Credits  
(Course works 24 Credit Hours and Thesis 12 Credit Hours)
- Estimated Tuition fee 99,000 Baht/Program (\$ 3,000)

### 2 Years. Plan B

- Coursework and Independent Study 36 Credits  
(Course works 33 Credit Hours and Independent Study 3 Credit Hours)
- Estimated Tuition fee 99,000 Baht/Program (\$ 3,000)

### Key Features of the Program

Master of Economics Program is designed to equip students with both theoretical knowledge and analytical skills necessary for applying in public and private sectors as well as non-profit organizations. Our Students are in great demand by employers because the program emphasis on how to use economic knowledge and statistical tool for analyzing data and applying for their works. The program also provide soft skills for students such as writing and presentation skill. Our faculty members spend every effort to guarantee an in-depth investigation of state-of-the-art economic research, while at the same time, providing opportunities for students to make appropriate applications to ongoing development agenda – not only in Thailand and Southeast Asia, but also in Asia and Countries around the world in a truly marketplace. Graduate program in economics encompasses both theoretical knowledge and practical application. Without the former, practical application becomes weakened and ineffective, and without the latter, theoretical understanding remains isolated and out of touch with the real world. Consequently, we believe that, with the theoretical training and respectful dialogue with our faculty that we provide, our students will develop the skills necessary to make practical and concrete contributions to economic development in Thailand and in the global arena.

## Master of Economics in Economics and Management (English Program)

### 2 Years. Plan A

- Coursework and Thesis 36 Credits  
(Course works 24 Credit Hours and Thesis 12 Credit Hours)
- Estimated Tuition fee 142,000 Baht/Program (\$ 4,303)

### 2 Years. Plan B :

- Coursework and Independent Study 36 Credits  
(Course works 33 Credit Hours and Independent Study 3 Credit Hours)
- Estimated Tuition fee 142,000 Baht/Program (\$ 4,303)

### Key Features of the Program

In 2016, the School of Development Economics's Master of Economics in Executive Economics Program underwent a revision and the name was changed to "Master of Economics in Economics and Management Program" (revised program, B.E. 2559). The revision was based on feedback from the program's stakeholders and approved by the Academic Council Committee, No. 1/2559, on February 24, 2016, and by the National Institute of Development Administration (NIDA) Council, No. 2/2559 (Special), on March 9, 2016. The revised Program aims to produce graduates as executives with a deep understanding of the economic condition who can utilize the knowledge in economics to manage ethically and in compliance with good governance principles for the benefit of society and the nation.

### Scholarship

Scholarships offered for Doctoral Degree and Master Degree are available for qualified students.

#### Note:

1. Please download application form, recommendation letter form and scholarship application forms from [www.oia.nida.ac.th](http://www.oia.nida.ac.th) and visit <http://edserv.nida.ac.th/> for further information on admission qualifications and requirements.
2. These expenses are inclusive of admission fee, tuition fee for non-credit courses, Textbooks, enrollment fee, registration fee, Thesis Defense, Comprehensive Examination and exclusive of Health insurance fee. For further information, please visit <http://edserv.nida.ac.th>.

Currency  
exchange rate:  
THB 33 = US\$ 1



## School in Focus

The School offers three doctoral programs; Applied Statistics, Computer Science and Information Systems, and Business Analytics and Data Science. The programs are designed to provide students with well balanced knowledge on both theoretical foundations and their applications. Graduates from the programs will have broad knowledge and specialized expertise in their respective fields. The School has full-time well qualified faculty staff engaging in many research fields in which students may be involved. The School also provides students with computer facilities that can fully support effective learning and conducting research.



Certified by AUN QA



## Doctor of Philosophy Program in Applied Statistics (International Program)

### 3-year Ph.D. Plan (1.1)

- Dissertation Only 48 Credits
- Estimated Tuition fee 230,120 – 360,000 Baht/Program (US\$ 6,973 – 10,909)

### 3-5-year Ph.D. Plan (2.1)

- Coursework and Dissertation plan 60 Credits (Course work 24 Credit Hours and Dissertation 36 Credit Hours)
- Estimated Tuition fee 257,120 - 436,000 Baht/Program (US\$ 7,792 - 13,212)

## Key Features of the Program

The Ph.D. in Statistics focuses on producing professionals for teaching and/or research. Through courses, seminars, and research, students in the program delve into sophisticated Statistical theories. These solid foundations will enable candidates to undertake a groundbreaking piece of both theoretical and applied research.

## Areas of Specialization

1. Statistics
2. Actuarial Science and Quantitative Risk Management
3. Business Analytics and Intelligence
4. Industrial Statistics, Operations Research, and Logistic Systems
5. Population and Policy Research Methods for Development



## Doctor of Philosophy Program in Computer Science and Information Systems (International Program)

### 3-year Ph.D. Plan (1.1)

- Dissertation Only 48 Credits
- Estimated Tuition fee 360,000 Baht /Program (US\$ 10,909)

### 3-5-year Ph.D. Plan (2.1)

- Coursework and Dissertation plan 60 Credits (Course work 24 Credit Hours and Dissertation 36 Credit Hours)
- Estimated Tuition fee 400,000 Baht /Program (US\$ 12,121)

### Key Features of the Program

This Ph.D. program is designed to produce Ph.D. graduates with profound knowledge of both the theoretical foundations and applications of computer science and information systems, for academia and/or industries.

### Areas of Specialization

1. Computer Science
2. Information Systems

## Doctor of Philosophy Program in Business Analytics and Data Science (International Program)

### 3-year Ph.D. Plan (1.1)

- Dissertation Only 48 Credits
- Estimated Tuition fee 360,000 Baht /Program (US\$ 10,909)

### 3-5-year Ph.D. Plan (2.1)

- Coursework and Dissertation plan 72 Credits (Course work 36 Credit Hours and Dissertation 36 Credit Hours)
- Estimated Tuition fee 450,000 Baht /Program (US\$ 13,636)

### Key Features of the Program

This curriculum aims at developing Ph.D. graduate with 21<sup>st</sup> century skills with strong research and statistical methodology and skills, information technology skills, and inquiry skills so that they can apply, analyze, solve, and provide better solutions for business, finance, insurance, logistics, industry, society, economic, and national problems to achieve sustainable development.

### Scholarship

Scholarships offered for Doctoral Degree are available for qualified students.



#### Note:

1. Please download application form, recommendation letter form and scholarship application forms from [www.oia.nida.ac.th](http://www.oia.nida.ac.th) and visit <http://edserv.nida.ac.th/> for further information on admission qualifications and requirements.
2. These expenses are inclusive of admission fee, tuition fee for non-credit courses, Textbooks, enrollment fee, registration fee, Thesis Defense, Comprehensive Examination and exclusive of Health insurance fee. For further information, please visit <http://edserv.nida.ac.th>.

Currency  
exchange rate:  
THB 33 = US\$ 1



## SCHOOL IN FOCUS

The strength of GSLC, which is clearly reflected in the curricula, is the fact that it encompasses faculty members with diverse fields of expertise, ranging from TESL, Discourse Studies, English, Japanese, and Communications Studies covering the depth and breadth of modern language and communication studies. The programs offered are innovative and interdisciplinary in nature. The international M.A. and Ph.D. programs in Language and Communication are the first of their kind in Thailand. GSLC also offers M.A. programs in English for Professional Development which provides practical knowledge for those who would like to excel in wide ranging careers related to the English language. The M.A. program in Japanese Communication and Culture explores the new horizons of Japanese studies. Further, GSLC is planning to offer an MA and PhD program in Teaching English as an International Language (TEIL) that prepare both Thai and non-Thai professors of English to be well versed in the interface between a discourse analysis of language studies and practical solutions to English Language Teaching challenges. All these GSLC programs, as well as its research and publications, complement the field of contemporary development administration.



**Note:**

1. Please download application, recommendation letter and scholarship application forms from [www.oia.nida.ac.th](http://www.oia.nida.ac.th) and visit <http://edserv.nida.ac.th/> for further information on admission qualifications and requirements.
2. These expenses are inclusive of admission fee, tuition fee for non-credit courses, textbook fees, enrollment fee, registration fee, Thesis Defense, Comprehensive Examination and exclusive of Health insurance fees. For further inquiries, please visit <http://edserv.nida.ac.th>.

Currency  
exchange rate:  
THB 33 = US\$ 1



## Doctor of Philosophy Program in Language and Communication (PLA)

### Doctor of Philosophy Program in Teaching English as an International Language (PET)

#### 3-year Ph.D. Track 1.1

- Dissertation Only (48 Credits)
- Tuition fee 369,000 Baht/ Program (\$ 11,822)

#### 3-year Ph.D. Track 2.1

- Course work and Dissertation 60 Credits  
(Course work 24 Credit Hours and Dissertation 36 Credit Hours)
- Tuition fee 449,000 Baht/ Program (\$ 13,606)

#### 4-year Ph.D. Track 2.2

- Coursework and Dissertation 75 Credits  
(Course work 27 Credit Hours and Dissertation 48 Credit Hours)
- Tuition fee 551,000 Baht/Program (\$ 16,696)

#### Key Features of the Program:

The program provides a foundation for its graduates to become leaders in the combined fields of language, communication and teaching. Thus, graduates can expand and enhance the body of knowledge in development administration to guide and solve key social problems that greatly impact the community.

## Master of Arts Program in Language and Communication (LAC) (International Program)

### Master of Arts Program in Teaching English as an International Language (TEIL) (International Program)

#### 2 Years. 36 Credits. Track A2 - Regular Program

- Course work 24 Credit Hours/and Thesis 12 Credit Hours
- Tuition fee 89,000 Baht/ Program (\$ 2,697)

#### 1.5 Years. 36 Credits. Track B - Regular Program

- Course work 33 Credit Hours/and Independent Study 3 Credits Hours
- Tuition fee 89,000 Baht/ Program (\$ 2,697)

#### 2 Years. 36 Credits. Track A2 - Special Program

- Course work 24 Credit Hours and Thesis 12 Credit Hours
- Tuition fee 182,000 Baht/ Program (\$ 5,515)

#### 1.5 Years. 36 Credits. Track B - Special Program

- Course work 33 Credit Hours and Independent Study 3 Credits Hours
- Tuition fee 182,000 Baht/ Program (\$ 5,515)

#### Key Features of the Program:

This program is unique as it equips students with both theoretical and practical knowledge in language, communication and teaching. Graduates of this program will be able to apply the knowledge gained to excel in their careers as professionals as well as in their personal endeavors.

#### Scholarship

Two doctoral degree scholarships and two master's degree scholarships are offered yearly.



# Graduate School of HUMAN RESOURCE DEVELOPMENT



## SCHOOL IN FOCUS

- International standard curriculum at local Thai currency tuition.
- Save money from less travel cost, and living expense in comparison to overseas courses and stay close to family and friends.
- Can continue to keep full-time workload, as classes are held on weekends
- All courses are co-taught with renowned Thai and International Scholars, providing the best of both worlds : Blending Eastern and Western Philosophies
- Great networking within Thailand and the region, as well as globally
- Include an annual field trip to attend international Academy of HRD conference and broader international networks







## Doctor of Philosophy Program in Human Resource and Organization Development (International Program)

**Doctoral Degree 3-5 Years - 63 Credits.**

- Course work 27 Credit Hours and 36 Dissertation Credit Hours
- Tuition fee 743,500 Baht/ Program (\$ 22,530)

**Master + Doctoral Degree 4-6 Years - 84 Credits.**

- Course work 36 Credit Hours and 48 Dissertation Credit Hours
- Tuition fee 857,500 Baht/Program (\$ 25,985)

## Key Features of the Program:

The Ph.D. International Program in HROD is suitable for both HR academics and professionals who base their decision making on the wealth information drawn from research and wish to have an in-depth understanding of working with human resources in Southeast Asia. This program blends knowledge and experience from renowned HROD from around the world with the local expertise and experience of our Thai faculty members.

## Scholarship

Scholarships offered for Doctoral Degree to applicants with distinguished achievements per year.



**Certified by AUN-QA**  
[www.facebook.com/PhDinHRODNIDA/](http://www.facebook.com/PhDinHRODNIDA/)



### Note:

1. Please download application form, recommendation letter form and scholarship application forms from [www.oia.nida.ac.th](http://www.oia.nida.ac.th) and visit <http://hrd.nida.ac.th/hrd-phd/> for further information on admission qualifications and requirements.
2. These expenses are inclusive of admission fee, tuition fee for non-credit courses, Textbooks, enrollment fee, registration fee, Thesis Defense, Comprehensive Examination and exclusive of Health insurance fee. For further inquiry, please visit <http://edserv.nida.ac.th> and Facebook: PhDinHRODNIDA

**Currency exchange rate:**  
**THB 33 = US\$ 1**



# Graduate School of **COMMUNICATION ARTS** AND MANAGEMENT INNOVATION (GSCM)

WELCOME TO GSCM

Graduate School of Communication  
Arts and Management Innovation



## School in Focus:

The Graduate School of Communication Arts and Management Innovation offers two graduate programs: the Master of Arts Program in Communication Arts and Innovation and the Doctor of Philosophy Program in Communication Arts and Innovation. Both programs aim to promote creativity and innovation in the intellectually-stimulating environment, which prepare students not only to be competitive but also to thrive and become successful in the challenging and rapid global technological change. The faculty members are nationally reputable with distinguished academic backgrounds and remarkable research experiences in communication and information technology fields. Our school is known and trusted for academic excellence and wide-ranging research collaborations with domestic and international educational institutes as well as government and private organizations.





## Doctor of Philosophy (English Program) in Communication Arts and Innovation

### 3-year Ph.D. Track 1

- Dissertation Only 48 credits
- Tuition Fee 829,500 Baht/Program (\$ 25,002)

### 3-year Ph.D. Track 2.1

- Coursework and Dissertation 54 credits (Course work 18 Credit Hours and Dissertation 36 Credit Hours)
- Tuition Fee 931,500 Baht/Program (\$ 28,228)

### 3-year Ph.D. Track 2.2

- Coursework and Dissertation 72 credits (Course work 24 Credit Hours and Dissertation 48 Credit Hours)
- Tuition Fee 1,225,500 Baht/Program (\$ 37,137)

### Key Features of the Program:

The Doctor of Philosophy Program in Communication Arts and Innovation is one of the country's most competitive Ph.D. in Communication programs. This interdisciplinary program offers innovative and profound learning in the theoretical and empirical research in the fields of media, communication, innovative marketing communication and information and communication technology. The students will not only strengthen their body of knowledge and advanced critical thinking skills in communication, but will also be closely guided to become academic scholars, experts, and administrators in communication-related fields.



#### Note:

1. Please download application form, recommendation letter form and scholarship application forms from [www.oia.nida.ac.th](http://www.oia.nida.ac.th) and visit <http://edserv.nida.ac.th/> for further information on admission qualification and requirements.
2. These expenses are inclusive of admission fee, tuition fee for non-credit courses, Textbook, enrollment fee, registration fee, Thesis Defense, Comprehensive Examination and exclusive of Health insurance fee. For further inquiry, please visit <http://edserv.nida.ac.th/>

## Master of Arts Program in Communication Arts and Innovation

### Regular Program

- 2 Year, 36 Credits.
  - Track 1** (Course work 24 Credit Hours and Thesis 12 Credit Hours)
  - Track 2** (Course work 33 Credit Hours and Independent Study 3 Credit Hours)

- Tuition Fee 102,500 Baht/Program (\$ 3,106)

### Special Program (International Programs)

- **Track 1** (Course work 24 Credit Hours and Thesis 12 Credit Hours)
- **Track 2** (Course work 33 Credit Hours and Independent Study 3 Credit Hours)
- Tuition Fee 411,700 Baht/Program (\$ 12,476)

### Key Features of the Program:

The Master of Arts Program in Communication Arts and Innovation is a distinct integrated communication program that promotes creativity and innovation through interdisciplinary learning in communication fields that are crucial for today's world. Students have the flexibility to integrate courses and research across three newly-revised majors including Innovative Marketing and Digital Communication (i-Digital Marketing), Innovative Digital Communication for Creative Industries (i-Creative), and Innovative Communication and Campaign for Social Change (i-Change). Students will be keenly trained to apply concepts and lessons into professional communication practices which will give them a solid foundation for either Ph.D. level study or becoming effective communication practitioners and administrators.

### Scholarships opportunities:

A variety of full and partial scholarships are offered annually.

Currency  
exchange rate:  
THB 33 = US\$ 1



## School in Focus:

- GSTM NIDA is certified by UNWTO TedQual
- Vision: To be an excellent school and knowledge resource in integration of tourism policies analysis, planning, development and management including education, research, trainings and tourism cooperation in respective international, regional, national and local levels. GSTM mainly aims to produce "Excellent Executives of Sustainable Tourism Expertise".
- Currently, our school has PhD lecturers whose academic positions are "Associate Professor" and "Assistant Professor" in tourism at most in Thailand, as well as a nationwide network of experts and professionals in tourism and hospitality industry. We strongly intend to improve the academic sector and the potential of manpower for national tourism industry and continuously promote teaching and research in order to progressively, stably boost Thai tourism industry in the future by emphasizing on systematic and constructive thinking skills from attitudes and aspects to urge students improving creative thinking based on academic knowledge and circumstance.



- Focusing on student-centered learning and participatory approach, students will be engaged in experiential learning through special lectures from international famous Thai/foreign tourism executives and scholars, academic activities such as fieldwork, academic seminars and etc. Each batch students have various professional and administration experience that is a great opportunity to possibly share, learn from each other and expand network.
- GSTM and NIDA have academic collaborative networks with well-known education institutions both Thailand and abroad as well as national and international related organizations and well recognized nationally and globally.

## Doctor of Philosophy Integrated Tourism and Hospitality Management

**3-year Ph.D. Track 1.1** Research-based mode :

- Thesis 48 credits and additional subjects (non-credits)
- Tuition fee 562,000 Bht. / program (\$ 17,031)\*

**3-year Ph.D. Track 2.1**

- Mixed-mode (Research and coursework) 57 credits (Coursework 21 credit hours and Dissertation 36 credit hours)
- Tuition fee 562,000 Baht / program (\$ 17,031)\*

**4-year Ph.D. Track 2.2**

- Master's and doctoral's degree 75 credits (Coursework 27 credit hours and Dissertation 48 credit hours) Tuition fee 720,000 Baht/program (\$ 21,819)\*

### Key Features of the Program:

The program provides doctoral graduates who possess knowledge, integrity and working experience in integrated tourism research, analysis, planning and management to meet with the demand of various organizations at regional, national, and domestic levels and to create new sets of knowledge on tourism and integrated tourism development.



The Graduate School of Tourism Management (GSTM)  
NATIONAL INSTITUTE OF DEVELOPMENT ADMINISTRATION (NIDA)  
118 Seri Thai Road, Klong-Chan, Bangkok, Bangkok 10240 Thailand

+66 2727-3671-3

+66 2375-4222

www.tour.nida.ac.th

nida.gstm@gmail.com

#### Note:

1. Please download application form, recommendation letter form and scholarship application forms from [www.oia.nida.ac.th](http://www.oia.nida.ac.th) and visit <http://edserv.nida.ac.th/> for further information on admission qualification and requirements.
2. These expenses are inclusive of admission fee, tuition fee for non-credit courses, Textbook, enrollment fee, registration fee, Thesis Defense, Comprehensive Examination and exclusive of Health insurance fee. For further inquiry, please visit <http://edserv.nida.ac.th/>

## Master of Management Program in Integrated Tourism and Hospitality Management

**2 year 36 credits**

- Full time: weekdays – Course work 24 credits hours and Thesis 12 credits hours or Course work 33 credit hours and Independent study 3 credit hours
- Tuition fee 98,500 Baht / program (\$ 2,985)

**2 year 36 credits (English Program)**

- Full time: weekdays - Coursework 24 credits hours and Thesis 12 credits hours or Coursework 33 credit hours and Independent study 3 credit hours) Tuition fee 112,315 Baht/program (\$ 3,405)

**2 year 36 credits**

- Part time: weekends – Coursework 24 credits hours and Thesis 12 credits hours or Coursework 33 credit hours and Independent study 3 credit hours
- Tuition fee 177,900 Baht / program (\$ 5,391)

**2 year 36 credits (Phuket Campus)**

- Part time: weekends - Coursework 24 credits hours and Thesis 12 credits hours or Coursework 33 credit hours and Independent study 3 credit hours)
- Tuition fee 174,900 Baht / program (\$ 5,300)

**2 year 36 credits**

- Part time: weekends–Research-based mode : Thesis 36 credits and additional subjects (non-credits)
- Tuition fee 177,900 Baht / program (\$ 5,391)

### We currently offer 5 minor MA program:

1. Integrated Tourism and Hospitality Policy, Planning and Management
2. Integrated Tourism and Hospitality Management
3. Hotel Management
4. Airline and Transportation Management
5. Hospitality Management

### Key Features of the Program:

The program is designed to produce master's degree graduates such as policy analysis, planners, executives, and administrators in tourism who possess knowledge and understanding in the fields of integrated tourism research, analysis, planning and management and who can utilize those sets of knowledge in determining tourism policy, planning, and management in sustainable fashion with integrity and good governance for benefits of the region, the nation, and the society.

**Scholarship** offered for Doctoral Degree and Master Degree yearly.

Currency  
exchange rate:  
THB 33 = US\$ 1

# The International College of National Institute of Development Administration (or ICO-NIDA)

The International College of National Institute of Development Administration (or ICO-NIDA) was established under the commitment for upgrading Thailand's education standard up closed to international standard then uplifting NIDA toward world-class university. Under our motto "**International, Intercultural, Interdisciplinary**", our graduate college aims for being a truly international program that provide interdisciplinary management courses for students under multicultural backgrounds. More than 50 percent of our classes are conducted from visiting professors and executives from different countries.

ICO NIDA aims for producing management graduates who have potential to work in different parts of the world in the areas such as public sector, private sector, non-profit organization, social enterprises and business entrepreneurship with knowledge, virtue, ethics as well as social responsibility. To build the capacity in education, the ability in doing research and, the capability of leading change which will contribute to sustainable development. ICO NIDA also fosters the exchange of knowledge among students from different cultures leading to more understanding and cooperation in the future.

Teaching methods include lectures by professors, teachers, and administrators, in-class workshops, case studies analyses, web-based learning and learning through different modes of multimedia, learning through experimentation and hands-on work, and participation in various other activities.

## Master of Management (English Program and Chinese Program) 12-16 Months

- International Business Management
- Marketing Management
- Financial Management
- Entrepreneurship Management
- E-Business Management
- Policy and Management
- Nonprofit Management
- Human Capital Management
- AEC-Business Management
- Tuition fee 299,000 Thai Baht/Program (\$ 10,000)

Our Master of Management Program covers a variety of fields under interdisciplinary context. Students will learn how to encompasses functions relating to planning, organizing, staffing, leading or directing, and controlling an organization for the purpose in accomplishing common goals or objectives. The program covers and integrate diverse disciplines relating to management.



## Ph.D. in Management (English Program and Chinese Program)

- Tuition fee 650,000 Thai Baht/Program (\$ 22,000)

This Doctor of Philosophy in Management program seeks to develop theoretical and methodological sophistication among its graduates so that they can understand important social and organizational problems, develop viable solutions, and contribute new knowledge to the global community of scholars in the field of management. Students are prepared to be scholars, academics, and professionals that aim to pursue careers in colleges and universities, research institutes, and public agencies and business organizations. Course work for the Ph.D. in Management ICO NIDA consists of a combination of both theoretical and practical learning of management well as research methodology courses to prepare students for their dissertations.

ICO NIDA students should be interested to participate in the following dual degree/exchange programs with tuition waive at host universities. Under our dual degree program, apart from Master of Management degree from ICO NIDA, students will have chance to earn their second master degree in the following fields.



## Dual Degree Programs

No.	University	Degree
1	Southwest University, China	Master of Public Administration (focus in Chinese Public Policy)
2	RheinMain University of Applied Sciences, Germany	MA Media and Design Management Master of International Business Administration
3	Nürtingen-Geislingen University, Germany	1. MBA in International Management 2. MS. In Leadership 3. MA. Automotive Management
4	University of Economics at Bratislava, Slovakia	1. MSc. Finance 2. Msc. International Finance
5	Indiana University at Bloomington, USA	Master of Public Affairs
6	Leonard de Vinci University, Paris	MA Marketing Innovation and Distribution MA Digital Marketing Strategy
7	Chung Hua University, Taiwan	MA Management
8	I-SHOU University, Taiwan	MBA
9	ShihChien University, Taiwan	MA of (Business and Economic)



## Exchange Program

University of Innsbruck (Austria), RheinMain University of Applied Science (Germany), Nürtingen-Geislingen University (Germany), Indiana University at Bloomington (USA), Indiana University Purdue University Indianapolis (USA), University of Economics at Bratislava (Slovakia), Southwest University (China), Chongqing University, Shanghai University of International Business and Economics (China), Chung Hua University (Chinese Taipei), GICI Business School (Indonesia), San Francisco State University (USA), I-SHOU University (Taiwan), ShihChien University (Taiwan), of Applied Science (Rotterdam, Netherland), Biberach University (Germany), National Chengchi University (Taiwan), Corvinus University (Hungary), Russian Presidential Academy of National Economy and Public Administration (St.petersburgh, Russia).

**Scholarship** will be further advised.



For more information:

The International College of the National Institute of Development Administration (ICO-NIDA)

19<sup>th</sup> Fl., Nawamindradhiraj Building, Serithai Road, Klong-Chan, Bangkok 10240.

@ [www.ico.nida.ac.th](http://www.ico.nida.ac.th)



# THE OFFICE OF INTERNATIONAL AFFAIRS (OIA)

Established on the 28<sup>th</sup> October 1993, the Office of International Affairs (OIA) is an independent office administered by Office of the President and under the supervision of the Vice President for Academic Affairs. With a relentless effort to foster “NIDA” to achieve internationalization, OIA has played an essential role in supporting the academic community and institutional missions in terms of foreign relations, regional and global collaboration toward internationalization goals and envisioned success as a World Class university.



## Our Vision

“Toward the Internationalization of NIDA with Professionalism and Strategic Partnerships”

## Our Mission

- Promote a robust network of regional and international collaborations
- Enhance database accessibility pertaining to international education and scholarship opportunity
- Extend warm hospitality and exclusive services to foreign scholars and international students
- Support secretarial and administrative tasks regarding international affairs and official documents
- Maintain fruitful cooperation with local and international partnerships







### Our activities:

#### Fostering academic and research collaboration through:

Memorandum of Understandings (MoUs)

- A network of cooperation with Royal Thai Embassies and international embassies
- Relationship Management Program (RMP)
- Academic exchange programs
- Visiting professor and study visit.

#### International scholarship event and advisory services

Serving as program coordinator and facilitator, OIA has rendered scholarships more accessible to persons pursuing academic endeavors. From time to time, scholarship events are introduced by OIA incorporated with various graduate schools at NIDA incorporated with International embassies and other funding resources. The gist of the events has aimed to provide further information and advisory service regarding scholarship opportunities to interested participants.



#### International Student and Scholar Services

To serve a number of international graduate students participating academic and training programs at NIDA, an International Student Club has been established to assist international students concerning social, cultural, and academic boundaries. Rather more significant is its goal to reinforce healthy relationships between Thai and foreign students through cultural exchange activities featured on the following programs: 1) OIA's Study Visit, 2) International Night, 3) Summer Camp, and 4) Relationship empowerment programs (Thai Language Class, Thai Cultural Program, Charitable Trip, International Student Farewell and Cultural Hours)

#### For Further Information:

Email: [ويا.نيدا.1993@gmail.com](mailto:ويا.نيدا.1993@gmail.com) for an immediate answer to most frequently asked questions



#### Contact Us:

National Institute of Development Administration (NIDA)  
Office of International Affairs (OIA)

118 Seri Thai Road, Klong-Chan, Bangkok,  
Bangkok 10240 THAILAND

+66 (0) 2727 3320-23, +66 (0) 2727 3327

+66 (0) 2732 4268

[ويا.نيدا.1993@gmail.com](mailto:ويا.نيدا.1993@gmail.com)

[www.ويا.نيدا.ا.ث](http://www.ويا.نيدا.ا.ث)

# NIDA's

## PARTNERS & MOU

# MAP



### Europe

<http://oia.nida.ac.th/main/partner-friend-en/europe-en>



#### Austria

- MODUL University\*
- University of Applied Sciences BFI Vienna\*
- University of Innsbruck
- University of Natural Resources and Life Sciences\*



#### Belgium

- The University of Antwerp



#### Czech

- University of Economic, Prague
- Technical University of Liberec



#### Germany

- Hochschule fur Wirtschaft und Umwelt Nuertingen Geislinger University
- Hochschule Bremen City University of Applied Sciences
- Hochschule Rheinmain University of Applied Sciences Wiesbaden Russelheim
- Kassel International Management School (KIMS)
- Kempten University of Applied Sciences (Hochschule Kempten)
- Reutlingen University (ESB)



#### Italy

- Free University of Bozen-Bolzano (FUB)



#### Russia

- Far Eastern Federal University
- Higher School of Economics, National Research University\*
- North-West Institute of Management of RANEP



#### Slovakia

The University of Economics in Bratislava



#### Spain

- Universidad de Catilla-La Mancha
- Universidad Nebrija
- Universitat Autonoma de Barcelona\*



#### Switzerland

- University of Fribourg



#### United Kingdom

- London School of Economics and Political Sciences (LSE)\*
- Nottingham Trent University\*
- University of Hull
- University of Surrey\*
- University of York\*



### North America

<http://oia.nida.ac.th/main/partner-friend-en/north-america-en>



#### U.S.A.

- California State University\*
- CFA Institute
- Clarkson University
- Colorado State University
- DePaul University\*
- Indiana University
- Northwestern University\*
- Salem State University
- University of Chicago\*
- University of Michigan
- University of Nebraska-Lincoln
- University of North Texas
- University of Wisconsin-Madison\*



### Australia & New Zealand

<http://oia.nida.ac.th/main/partner-friend-en/australia-new-zealand-en>



#### Australia

- Griffith University



#### New Zealand

- Auckland University of Technology
- The University of Auckland\*
- Victoria University of Wellington\*



### Africa

<http://oia.nida.ac.th/main/partner-friend-en/africa>



#### Ghana

- University of Education, Winneba



#### Malawi

- ShareWORLD Open University



#### South Africa

- North-West University



## ASIA

<http://oia.nida.ac.th/main/partner-friend-en/asia-en>



### Bangladesh

- Bangladesh Public Administration Training Centre  
North South University



### Cambodia

- Royal School Administration



### China

- Beijing Foreign Studies University
- Changzhou Institute of Technology
- Changzhou University
- Chengdu University
- Chongqing University
- Chongqing University of Science and Technology
- Communication University of China (CUC)\*
- Guangdong Institute of Public Administration
- Guangdong University of Finance (GDUF)
- Guangdong University of Technology
- Institute of Earth Environment,  
Chinese Academy of Sciences (IEECAS)
- Kunming University of Science and Technology
- Nanchang Institute of Technology
- Neijiang Normal University\*
- Ningxia Polytechnic, The Open University of Ningxia
- Peking University\*
- Shanghai University of International Business and  
Economics (SUIBE)
- Southwest University
- Tsinghua University\*
- University of International Business and Economics (UIBE)
- Xiamen University
- Xi'an Jiaotong University\*
- Xi'an Kedagaoxin University
- Xihua University
- Yunnan Normal University
- Yunnan University
- Yunnan University of Finance and Economics
- Zhejiang University\*



### Indonesia

- Gici Business School
- University of Gadjah Mada



### Israel

- University of Haifa



### Japan

- Hakuoh University
- Hitotsubashi University
- Ritsumeikan University
- Ryukoku University
- The National Graduate Institute for Policy Studies (GRIPS)
- Tokyo University of Foreign Studies\*
- University of Tokyo\*
- University of Tsukuba\*



### South Korea

- Handong Global University
- Inha University
- Korea Institute of Public Administration (KIPA)
- Korea University
- Kyung Hee University\*
- Pukyong National University
- Seoul National University
- Sungkyunkwan University
- University of Seoul
- Yonsei University



### Laos

- National University of Laos
- Banking Institute, Bank of the Lao PDR



### Macao

- Macao Polytechnic Institute\*
- University of Macau\*
- University of Saint Joseph\*



### Malaysia

- University of Malaya
- University Utara Malaysia



### Mongolia

- National Academy of Governance
- National University of Mongolia



### Myanmar

- Myanmar Institute of Theology
- University of Yangon\*
- University of Foreign Languages, Yangon\*
- Yangon University of Economics\*



### Pakistan

- University of Sindh, Jamshoro



### Philippines

- De La Salle University



### Singapore

- National University of Singapore



### Sri Lanka

- University of Colombo



### Taiwan

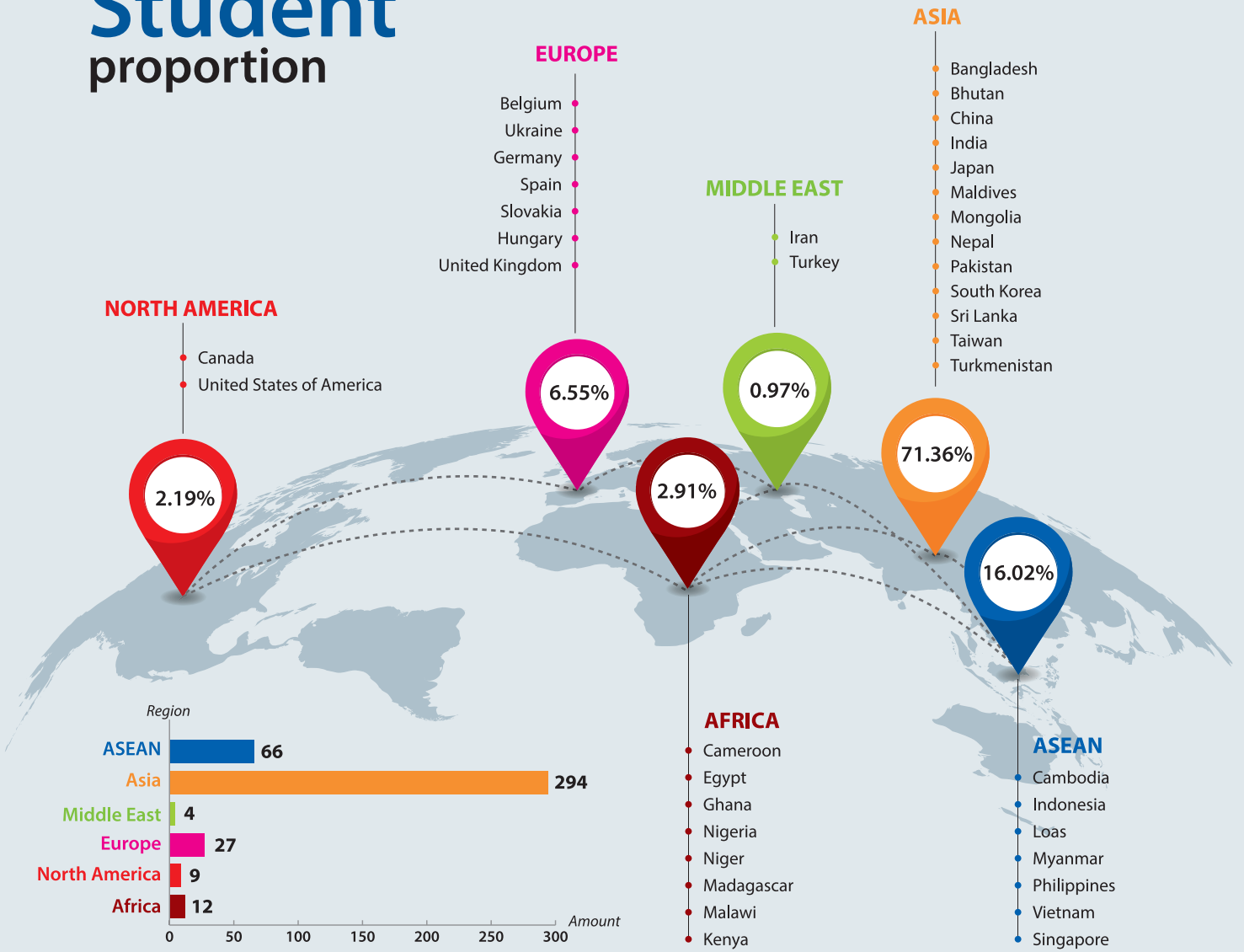
- Cheng Shiu University\*
- Chung Hua University
- Chung Yuan Christian University\*
- Fo Guang University
- I-Shou University
- National Chengchi University
- National Chi Nan University\*
- National Chung Hsing University
- National Pingtung University of Science and Technology
- National Taipei University
- National University of Tainan
- Tamkang University



### Vietnam

- Hong Bang International University
- International University - Vietnam National University
- Phuong Dong University
- University of Social Science and Humanities

# Student proportion



**National Institute of Development Administration**  
 118 Serithai Road, Klong-Chan, Bangkok THAILAND 10240  
 ☎ +66 2727-3320-23, 2727-3327 📞 +66 2732-4268

